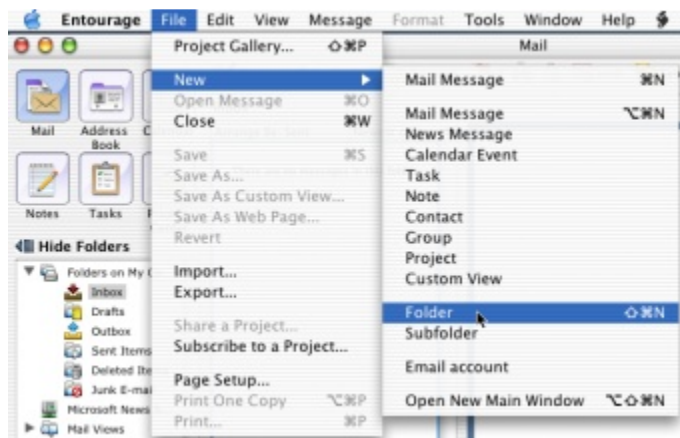


Spam Filter Setup For Entourage

To start using the new Spam Filtering in Entourage we will start by creating a folder by selecting:
File -> New -> Folder

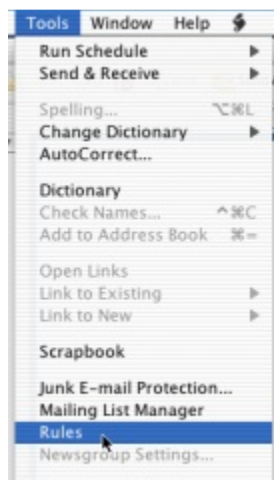


Next, give the folder a meaningful name to designate the contents as possible spam, the name does not matter for setting up filtering, but is useful for you to classify what is in the folder.

Now we will set up a rule to re-direct the messages that are tagged as possibly being spam to the folder we just created by choosing:

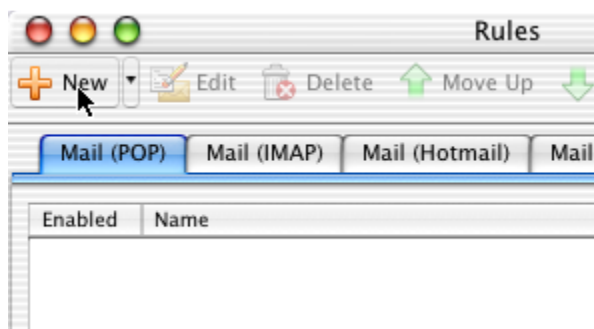
Tools -> Rules

From the top menu bar:

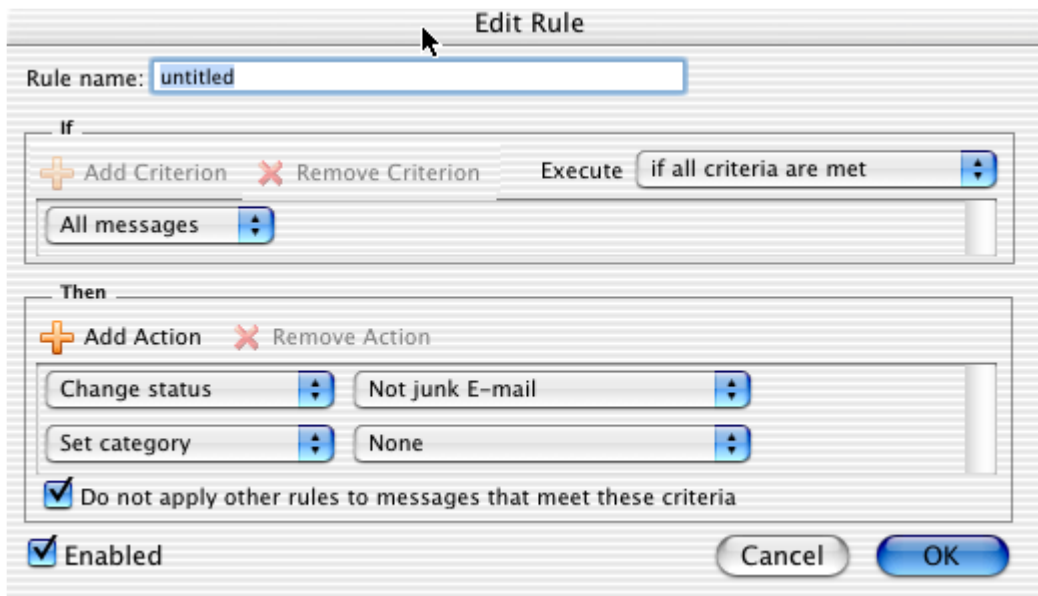


This should pop up a new window.

Click on the "New" button to create the new filter rule.



The new window will look like this:



To set up the new rule:

Change the "Rule Name" to Spam

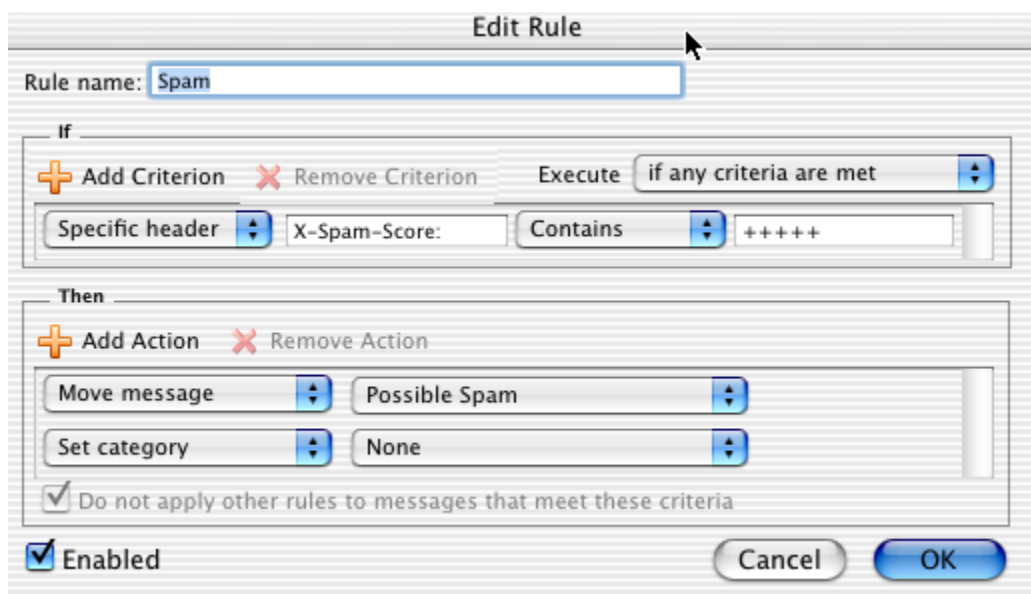
Click on the "if all criteria are met" and change it to "if any criteria are met"

Click on the "All messages" and change it to "Specific header" and then type in "X-Spam-Score:" in the box next to the "Specific header" and type in 5 plus signs + + + + + in the box next to "Contains".

The header X-Spam-Score: is case sensitive, so ensure you have the correct capitalization on the specific header name.

Click on the "Change status" and change it to "Move message" and change the "Not junk E-mail" to the folder you created in the first step.

When you are done, the rule should look like the one below. Click "Ok" to finish.



The spam filter is not foolproof and can misidentify email messages as spam which are not, so ensure you check the messages in the new folder for misclassified emails.